

Environment and Economy Overview and Scrutiny Committee

24 September 2009

Agenda

The Environment and Economy Overview and Scrutiny Committee will meet at the
SHIRE HALL, WARWICK on 24 September 2009 at 10:00 a.m.

The agenda will be: -

1. General

(1) Apologies for absence

(2) Members' Disclosure of Personal and Prejudicial Interests

Members should disclose the existence and nature of their personal interests at the commencement of the relevant item (or as soon as the interest becomes apparent). If that interest is a prejudicial interest the Member must withdraw from the room unless one of the exceptions applies.

Membership of a district or borough council is classed as a personal interest under the Code of Conduct. A Member does not need to declare this interest unless the Member chooses to speak on a matter relating to their membership. If the Member does not wish to speak on the matter, the Member may still vote on the matter without making a declaration.

(3) Minutes of the meeting of the Environment and Economy Overview and Scrutiny Committee held on 2 July 2009 and matters arising

(4) Key Messages from the Overview and Scrutiny Board

2. Public Question Time

Up to 30 minutes of the meeting is available for members of the public to ask questions on any matters relevant to the business of the Environment Overview and Scrutiny Committee. Questioners may ask 2 questions and can speak for up to three minutes each.

To be sure of receiving an answer to an appropriate question, please contact Ann Mawdsley on 01926 418079 or e-mail annmawdsley@warwickshire.gov.uk at least 15 minutes before the start of the meeting and ensure that Council staff are aware of the matter on which you wish to speak.

3. Portfolio Holder Update

A verbal update from Portfolio Holders for Environment and Economy.

4. Waste Management Statistics for 2008/09

Report of the Strategic Director for Environment and Economy

The report details the quantities of waste arising in each District area and handled by each Council during 2008/09. It also highlights trends and some of the main differences between Councils.

Recommendation

That the Committee scrutinizes the report and makes recommendations as appropriate.

For further information please contact Roy Burton, Group Manager, Waste Management, Tel 01926 412593 e-mail royburton@warwickshire.gov.uk.

5. Economic Briefing Notes

Report of the Strategic Director Environment and Economy

Regular Economic Briefing Notes (currently monthly but moving to quarterly) are currently produced by officers in Environment and Economy Directorate (EED) and circulated to all Members of the Environment and Economy Overview and Scrutiny Committee. A copy of the latest briefing is attached in Appendix A.

Recommendation

Committee Members are asked to consider the attached Briefing and identify any potential issues for further scrutiny.

For further information please contact David Hill, Economic Strategy Advisor
Regeneration, Strategy and Europe, Tel. 01926 418603 E-mail
davidhill@warwickshire.gov.uk.

6. Forward Plan Items Relevant to the Work of this Committee

A table setting out provisional items for future meetings is attached.

Forward Plan

For information:

Cabinet – 15 October 2009

Progress Report – Project Transform
The Future of ETW (Education Training Warwickshire)
Rugby Western Relief Road

Cabinet – 26 November 2009

Ufton In Vessel Composting Plant – Contract with Biffa Waste Services Ltd

7. Any Other Items

Which the Chair decides are urgent.

Shire Hall,
Warwick.

JIM GRAHAM
Chief Executive

Environment and Economy Overview and Scrutiny Committee Membership

County Councillors:- Penny Bould, David Bryden (*Vice Chair*), Les Caborn, Chris Davis, Mike Doody (*Chair*), Joan Lea, Barry Lobbett, Phillip Morris- Jones, Ray Sweet, Helen Walton, John Whitehouse and Chris Williams

Cabinet Portfolio Holders:- Alan Cockburn, Peter Fowler and Chris Saint

The reports referred to are available in large print if requested

General Enquiries: Please contact Ann Mawdsley on 01926 418079
E-mail: annmawdsley@warwickshire.gov.uk

Minutes of the Environment and Economy Overview and Scrutiny Committee meeting held on 2nd July 2009.

Present:

Councillors:

Martyn Ashford
Penny Bould
Chris Davis
Joan Lea
Barry Lobbett
Phillip Morris- Jones
Dave Shilton
Ray Sweet
Helen Walton
John Whitehouse
Chris Williams

Also Present: Councillors Alan Cockburn, Peter Fowler and Chris Saint

Officers	Liz Firmstone	Financial Services Manager
	Paul Galland	Strategic Director
	Andy McDarmaid	Environmental management and Performance Manager
	Kevin McGovern	Operations Manager
	Roger Newham	Chief Transport Planner
	John Scouller	Head of Skills Tourism and Economy
	Martin Stott	Head of Environment & Resources.
	Jeff Welsby	Interim Group Manager
	Paul Williams	Scrutiny Officer
	John Wright	Committee Manager

1. Election of Chair

Resolved that Councillor Phillip Morris- Jones be elected Chair for the meeting

2. General

(1) Apologies for absence

Apologies for absence were received from David Bryden, Les Caborn and Mike Doody

(2) Members Declarations of Personal and Prejudicial Interests

Councillor Bould declared personal interests as

- A disability access consultant trading as Access Unlimited/Penny Bould
- A member of Friends of the Earth
- A member of Warwick District Tree Warden Network
- A member of GMB Trade Union

- A member of NUJ trade Union

Councillor Whitehouse declared personal interests as

- A member of Friends of the Earth
- A member of Sustrans

Councillor Lea declared a personal interest in any matter relating to Project Transform as a member of the Regulatory Committee

(3) Minutes

- (i) The Minutes of the meeting of the Economic Development Overview and Scrutiny Committee held on 17th March 2009 were noted.
- (ii) The Minutes of the meeting of the Environment Overview and Scrutiny Committee held on 9th April 2009 were noted.
- (iii) The Minutes of the meeting of the Environment and Economy Overview and Scrutiny Committee held on 23rd June 2009 were agreed and signed as a correct record

3. Disability Access

Councillor Bould stated that in her view

- All people attending meetings should be greeted on arrival.
- They should be asked if they have any disabilities which may impair their ability to understand the meeting e.g needing line of sight for speakers in order to lip read.
- If necessary individuals should be offered appropriate seating to allow them to fully understand and if appropriate contribute to the meeting.

She referred to the work that had recently been undertaken in the Council Chamber to improve accessibility and suggested that it was a shame that the Council had decided not to proceed with a fuller refurbishment. In response Councillor Cockburn stated that the Council was continually working to improve facilities in it's buildings to ensure they met the requirements of the Disability Discrimination Act. He stated that the decision not to refurbish the Council Chamber had not been made on political grounds.

4. Public Question Time

No public questions were submitted.

5. Effective Scrutiny - Scrutiny Officer

Paul Williams, Scrutiny Officer gave a presentation to members on effective scrutiny and the development of a work programme.

6. Challenges and Opportunities For Next 12 Months - Portfolio Holder(s)

Councillors Cockburn, Fowler and Saint each gave a presentation to the Committee on the challenges and opportunities for the next 12 months.

The issues identified by Councillor Saint for the Leisure, Culture and Housing portfolio holder included

- Planning including minerals extraction, waste disposal
- Libraries
- Regional Spatial Strategy
- Single Integrated Regional Strategy
- Country parks
- Tourism

The issues identified by Councillor Fowler for the Economic Development portfolio holder included

- Helping local business – assisting and enabling
- Skills agenda – tackling the issue of Not in Employment Education or Training (NEET)
- Economic Assessments – working within the sub region
- Regeneration projects
- Narrowing the gaps – reducing areas of deprivation across Warwickshire

The issues identified by Councillor Cockburn for the Environment portfolio holder included

- Transport and highways
- Highways maintenance
- Project Transform
- Grass cutting
- Rugby Western Relief Road
- Flood Management
- Climate Change

Members sought clarification on a number of issues arising from the presentation including

- The operation of the new Highways depot structure
- The need for funding for any additional role the Council is asked to perform relating to flooding prevention
- Kenilworth Station
- The timetable for Project Transform

Resolved that the report be noted

7. Full Year Directorate Report Card 2008/09 (April 2008 – March 2009) (Report previously scheduled to be presented to the former Environment Overview and Scrutiny Committee)

The Committee considered a report on an analysis of the Environment and Economy Directorate's full year performance for 2008/09. It reported performance against the key performance indicators as set out in the Directorate Report Card.

Members were informed that in future performance information would be presented in a different manner. Reporting would be by exception and report performance that was below target or in excess of 10% above. Improvement Plans would need to be prepared for such measures.

Paul Galland informed members that a common sense approach would be taken towards the reporting of performance data and if Members or the Strategic Director felt that there were additional areas of performance that needed to be drawn to members attention which would not normally be reported he would ensure members were made aware of them

Resolved that the report be noted

8. Full Year Directorate Report Card 2008/09 (April 2008 – March 2009) – (Report previously scheduled to be presented to the former Economic Development Overview and Scrutiny Committee)

The Committee considered a report on an analysis of the Environment and Economy Directorate's full year performance for 2008/09. It reported performance against the key performance indicators as set out in the Directorate Report Card.

Members were concerned that much of the data set out in the report was out of date and were informed that much of the information related to performance indicators that the council was required to monitor by the government. In future a range of sources would be used to gather information which would be as up to date as possible and would provide a realistic view of local performance

Resolved that the report be noted.

9. Progress report on the Budget and Savings Plan for the Environment and Economy Directorate

The Committee considered an update on the progress being made by the Environment and Economy Directorate in delivering its savings targets and balancing its budget. The Directorate was facing a savings target of £3.903 million for the year rising to an estimated £5.686 million by the end of 2011/12. To date the Directorate had identified savings of £4.8m in the first year which was a combination of one off payments and long term sustainable savings.

Members complimented the Directorate on progress made to date in identifying saving and expressed support for the one off sums which had been requested from the Council's reserves to cover exceptional costs relating to street lighting energy and winter maintenance.

Resolved that the Environment and Economy Directorate's progress to date in balancing its budget and delivering its savings plan be noted and endorsed.

10. Workshop

The Committee broke into a workshop session to identify priority issues for the Committees annual work programme. The following issues were identified

Update Reports

- Project Transform.
- "20's plenty" 20mph pilot.
- Vehicle restrictions at Household Waste Recycling
- Concessionary travel for young people

Policy Development

- Local Transport Plan 3
- Engagement with Voluntary Sector - Youth

Light Review Work

- Maximising the Value For money in regeneration projects
- Surveys of employment levels on industrial estates to get employers to create more jobs.
- Keresley Village – Potential regeneration area
- A444 Diamond in Nuneaton - Highways

More Detailed Review Work

- Review of effectiveness of new County Highways structure and change from 5 to 2 area offices.
- Review of street lighting pilots and energy efficiency measures.
- Speed limit review on A and B roads - review of impact on casualties.
- Waste minimisation.
- Climate change and Carbon Reduction Commitment - what has been achieved so far?
- Bus services now compared to before de-regulation - impact on access to schools, jobs, etc.
- Impact of housing growth on jobs, environment, etc
- NEETS
- Skills and young people
- Potential delivery mechanism - 'Slivers of time' initiative
- Access to Training/Roles of key public sector providers
- Identifying support initiatives and how they link together

.....
Chair

The Committee rose at 12.30 p.m.

AGENDA MANAGEMENT SHEET

Name of Committee Environment and Economy Overview and Scrutiny Committee

Date of Committee 24 September 2009

Report Title Waste Management Statistics for 2008/09

Summary The report details the quantities of waste arising in each District area and handled by each Council during 2008/09. It also highlights trends and some of the main differences between Councils.

For further information please contact Roy H Burton
Group Manager, Waste Management
Tel. 01926 412593
royburton@warwickshire.gov.uk

Would the recommended decision be contrary to the Budget and Policy Framework? No

Background Papers None

CONSULTATION ALREADY UNDERTAKEN:- *Details to be specified*

- Other Committees
- Local Member(s)
(With brief comments, if appropriate)
- Other Elected Members Councillor D Bryden)
Councillor M Doody) for information.
Councillor R Sweet)
Councillor J Whitehouse)
- Cabinet Member Councillor A Cockburn
(Reports to The Cabinet, to be cleared with appropriate Cabinet Member)
- Chief Executive
- Legal I Marriott – comments noted.
- Finance

- Other Chief Officers
- District Councils
- Health Authority
- Police
- Other Bodies/Individuals

FINAL DECISION **YES** *(If 'No' complete Suggested Next Steps)*

SUGGESTED NEXT STEPS :

Details to be specified

- Further consideration by this Committee
- To Council
- To Cabinet
- To an O & S Committee
- To an Area Committee
- Further Consultation

**Environment Overview and Scrutiny Committee
24 September 2009**

Waste Management Statistics for 2008/09

**Report of the Strategic Director for
Environment and Economy**

Recommendation

That the Committee scrutinises the report and makes recommendations as appropriate.

1. Introduction

- 1.1 **Appendix A** gives details of the amount of household waste arising in each district area and the quantities recycled, composted and incinerated. **Appendix B** compares the overall performance of Warwickshire with other councils. **Appendix C** categorises the waste recycled and composted. **Appendix D** provides more information on the quantities of municipal waste handled and other performance data.

2. Main Points for 2008/098

- 2.1 **Household Waste by District Area** With regard to **Appendix A** some of the main points are:-
- (a) The overall recycling and composting rate was over 43%.
 - (b) Total household waste reduced by 2.23% from 2007/08 to 2008/09. There were reductions in each District, except Rugby, with over a 5% reduction in Stratford. The increase in Rugby is due to the Hunters Lane recycling centre operating for the full year, being down for 6 months in 2007/08 for refurbishment, and the reduction in Stratford is due to the district not collecting green waste in the latter part of the year.
 - (c) The Warwick District area had the lowest kilograms per head in 2008/09 with North Warwickshire having the highest.
 - (d) With respect to District Council performance, Warwick achieved the highest composting and recycling rate at 52.14% followed by Stratford at 47.01%. Warwick's performance considerably improved from the figure of 30.88% in 2007/08 due to the introduction of the new biowaste

collection service covering all properties and the alternate weekly collection of residual waste.

- (e) With respect to Recycling Centre performance, the two centres in Warwick District achieved the highest rate at an average of 77.05%. The site with the poorest performance was Judkins at 40.71%.
- (f) The highest composting and recycling rate was achieved with the waste generated in the Warwick District area at 58.19%. The highest in 2007/08 was Stratford District at 45.02%.
- (g) Total recycling composting and re-use increased by over 19,000 tonnes compared with 2007/08.
- (h) As indicated in the note to **Appendix A**, the statistics have been prepared from several sources of information. Wherever possible DEFRA WasteDataflow (WDF) data has been used.

2.2 Comparisons with other Authorities

- (a) **Appendix B** compares Warwickshire's performance with other shire councils. It will be seen that Warwickshire is the most improved shire council in 2008/09 in terms of recycling and composting with overall performance increasing by 7.81 percentage points. This was mainly due to the new arrangements introduced in Warwick District.

2.3 Recycling and Composting As regards **Appendix C** some of the main points are:-

- (a) Paper/card based products are the most recycled materials at almost 28,000 tonnes. Glass is the second most recycled material at almost 14,000 tonnes.
- (b) Certain materials are virtually only recycled by the County Council but some are delivered by the district councils to the County for recycling. Wood and scrap metal fall into the first category and electrical goods fall into the second category.
- (c) The other compostable waste is primarily the biowaste (green and kitchen) collected by Warwick District and just over 1,900 tonnes of wood sent for composting from household waste recycling centres.
- (d) It will be seen that only about 800 tonnes of non-household waste is recycled plus 2,183 tonnes of rubble which is also not classified as household waste.

2.4 Municipal Waste, National Indicators, LPSA2 Monitoring With respect to **Appendix D**, the main points are:-

- (a) Municipal waste decreased by 2.4% from 2007/08 to 2008/09.

- (b) There was a further 16.7 % diversion of biodegradable municipal waste (BMW) away from landfill reducing the amount landfilled to 95,107 tonnes. The allocation for 2008/09 excluding surpluses carried forward from previous years was 129,365 tonnes.
- (c) Total waste landfilled reduced by 15.5%.
- (d) It will be seen that we have met our LPSA2 target of recycling 23,000 tonnes of non-biodegradable recyclables. It will be seen that in the last year this was helped by significant increases in the recycling of glass, cans and plastics.
- (e) The LAA NI 191 target was 746 kgs per household and it will be seen that this was met by some margin.

3. Financial Implications

3.1 None.

PAUL GALLAND
Strategic Director for Environment and Economy
Shire Hall
Warwick

11 September 2009

Appendix A of Agenda No

Environment and Economy Overview and Scrutiny Committee- 24 September 2009

Waste Management Statistics for 2008/09

Household Waste Produced by each District area in 2008/2009 - Tonnes

	Stratford	Warwick	Rugby	Nuneaton	North W.	Total
Population	117,800	134,600	91,000	121,200	62,200	526,800
District Council						
District recycled	11,684.12	12,357.23	6,211.89	9,457.55	3,310.13	43,020.92
District reuse	0.00	0.00	34.53	0.00	0.00	34.53
District composted	12,887.68	13,758.83	7,322.94	8,849.69	5,296.82	48,115.96
District other	27,695.03	23,975.21	28,517.15	36,117.73	21,442.77	137,747.89
Total District	52,266.83	50,091.27	42,086.51	54,424.97	30,049.72	228,919.30
Household waste kilos/head	444	372	462	449	483	435
District recycling and composting rate	47.01	52.14	32.16	33.64	28.64	39.81
County Council Recycling Centres						
HWS recycled	3,722.02	6,347.63	1,861.91	2,438.97	1,621.41	15,991.94
HWS composted	2,643.48	4,514.26	1,377.10	1,026.64	1,027.60	10,589.08
Residual waste excluding inerts	4,623.06	3,236.17	2,498.65	5,047.83	1,736.95	17,142.66
Total County	10,988.56	14,098.06	5,737.66	8,513.44	4,385.96	43,723.68
Household waste kilos/head	93	105	63	70	71	83
% recycling and composting	57.93	77.05	56.45	40.71	60.40	60.79
Charities (recycling or reuse)	14.33		2.03	104.17		120.53
Other general		81.21	361.04			442.25
Other composting		1000.00				1000.00
Total household waste 2008/09	63,269.72	65,270.54	48,187.24	63,042.58	34,435.68	274,205.76
Total (07/08)	66,986.13	67,012.60	47,826.24	64,017.47	34,621.65	280,464.09
% Change 07/08 to 08/09	-5.55	-2.60	0.75	-1.52	-0.54	-2.23
Kilos per head (08/09)	537	485	530	520	554	521

Percentage of total collected by District	82.61	76.74	87.34	86.33	87.26	83.48
	Stratford	Warwick	Rugby	Nuneaton	North W.	Total
Total recycling	15,420.47	18,704.86	8,075.83	12,000.69	4,931.54	59,133.39
Total composting	15,531.16	19,273.09	8,700.04	9,876.33	6,324.42	59,705.04
% Recycling	24.37	28.66	16.76	19.04	14.32	21.57
% Composting	24.55	29.53	18.05	15.67	18.37	21.77
% Recycling and composting	48.92	58.19	34.81	34.70	32.69	43.34
Total composted plus recycled	30,951.63	37,977.95	16,775.87	21,877.02	11,255.96	118,838.43
Total composted plus recycling in 2007/08	30,157.68	26,840.67	13,236.88	18,561.78	10,732.96	99,529.97

0

Note :-

- 1 District Council figures have been taken from WasteDataflow records and County Council figures from in house records.
- 2 Other composting is composting from street sweepings.
- 3 Total household waste from Waste Dataflow (WDF) is 275,225.52 tonnes.

WDF figures have 69.19 tonnes of additional recyclables, no additional compostables and 950.57 tonnes of additional residual waste.,

Environment and Economy Overview and Scrutiny Committee - 24 September 2009

Waste Management Statistics for 2008/09

NI192 - Percentage, Recycling, Re-use and Composting

Comparisons with Other Shire Counties

		200/809	2007/08	Change 0708
		%	%	to 0809 %
	Authority			points
1	Leicestershire County Council	52.00	48.61	3.39
2	Cambridgeshire County Council	51.99	50.97	1.02
3	Devon County Council	51.61	47.30	4.31
4	Lincolnshire County Council	50.75	50.51	0.24
5	Somerset County Council	49.15	50.99	-1.84
6	Suffolk County Council	48.40	45.89	2.51
7	Dorset County Council	48.14	45.77	2.37
8	Cheshire County Council	47.97	41.05	6.92
9	Shropshire County Council	47.57	43.55	4.03
10	Northamptonshire County Council	46.04	42.91	3.13
11	Staffordshire County Council	45.56	42.33	3.23
12	Hertfordshire County Council	43.99	38.76	5.23
13	Buckinghamshire County Council	43.66	41.84	1.82
14	Essex County Council	43.51	39.82	3.70
15	Lancashire County Council	43.21	41.27	1.94
16	Warwickshire County Council	43.20	35.39	7.81
17	North Yorkshire County Council	43.16	38.54	4.62
18	Cumbria County Council	43.11	38.85	4.26
19	Norfolk County Council	43.07	40.46	2.61
20	Oxfordshire County Council	43.05	40.24	2.82
21	Bedfordshire County Council	42.90	39.49	3.42
22	Worcestershire County Council	42.56	38.34	4.23
23	Gloucestershire County Council	42.01	36.40	5.61
24	Nottinghamshire County Council	41.59	39.27	2.33
25	Derbyshire County Council	41.34	37.56	3.79
26	Hampshire County Council	41.19	40.31	0.88
27	Surrey County Council	40.92	35.28	5.64
28	Wiltshire County Council	40.51	36.67	3.84
29	West Sussex County Council	39.93	37.49	2.45
30	Northumberland County Council	38.93	36.91	2.03
31	Kent County Council	38.65	35.82	2.83
32	Cornwall County Council	36.76	34.41	2.35
33	East Sussex County Council	35.36	33.09	2.27
34	Durham County Council	29.10	24.16	4.94

Environment and Economy Overview and Scrutiny Committee - 24 September 2009

Waste Management Statistics for 2008/09

Recycling, Re-Use and Composting - Municipal Waste

Recycled or re-used	North Warwicks	Nuneaton & Bedworth	Rugby	Stratford	Warwick	WCC	Total
Glass	1,201.36	2,363.44	2,157.98	3,578.23	3,982.00	662.38	13,945.39
Paper	1,766.89	4,111.18	0.00	2,331.72	5,392.55	1,506.51	15,108.85
Card	6.14	1,214.30	0.00	126.22	1,610.12	2,144.05	5,100.83
Books	8.64	0.00	0.00	0.68	0.00	0.18	9.50
Mixed paper & card	0.00	0.00	3,591.26	3,973.61	0.00	165.89	7,730.76
Cans	227.23	633.22	299.09	534.20	528.74	0.00	2,222.48
Plastics	3.12	828.00	125.20	1,122.08	575.05	283.01	2,936.46
Textiles & footwear	85.88	116.22	105.89	17.36	252.33	475.39	1,053.06
Wood	0.00	0.00	0.00	0.00	0.00	4,226.82	4,226.82
Fridges & Freezers	0.00	59.48	0.00	1.13	0.00	579.59	640.20
Other electrical goods	0.00	22.20	0.00	0.00	0.00	2,169.27	2,191.47
Other Scrap metal	10.86	88.05	0.00	0.00	0.00	3,693.27	3,792.18
Fluorescent tubes	0.00	0.00	0.00	0.00	0.00	6.40	6.40
Aluminium foil	0.00	0.00	0.00	0.00	0.00	1.21	1.21
Automotive batteries	0.00	16.17	0.00	0.00	0.00	161.87	178.04
Post consumer, non automotive batteries	0.00	0.00	0.00	0.00	15.55	6.26	21.81
Vegetable Oil	0.00	0.00	0.00	0.00	0.00	1.12	1.12
Mineral Oil	0.00	5.28	0.00	0.00	0.00	68.42	73.70
Other materials	0.00	0.67	0.00	0.00	0.89	95.73	97.29
Sub Total	3,310.13	9,458.20	6,279.42	11,685.23	12,357.23	16,247.37	59,337.57
Household waste	3,310.13	9,458.20	6,246.42	11,684.10	12,357.23	16,146.50	59,202.58

Material Composted

Green waste only	5,296.82	9,137.93	7,601.58	12,887.68	0.00	9,674.39	44,598.40
Other compostable waste	0.00	0.00	89.12	0.00	13,758.83	1,923.56	15,771.51
Sub Total	5,296.82	9,137.93	7,690.70	12,887.68	13,758.83	11,597.95	60,369.91
Household Waste	5,296.82	8,849.69	7,322.94	12,887.68	13,758.83	11,589.08	59,705.04
	North Warwicks	Nuneaton & Bedworth	Rugby	Stratford	Warwick	WCC	Total
Totals							
Total	8,606.95	18,596.13	13,970.12	24,572.91	26,116.06	27,845.32	119,707.48
Household waste	8,606.95	18,307.89	13,569.36	24,571.78	26,116.06	27,735.58	118,907.62

Rubble Re-used/Recycled

Rubble	0.00	0.00	0.00	0.00	0.00	2,183.84	2,183.84
--------	------	------	------	------	------	----------	----------

Environment and Economy Overview and Scrutiny Committee - 24 September 2009

Waste Management Statistics for 2008/09

Municipal Waste

	2006/07	2007/08	2008/09	% Change
By source/type				2007/08 to 2008/09
Household – tonnes	292,250	281,402	275,226	-2.2
Commercial – tonnes	10,906	10,641	10,043	-5.6
Asbestos – tonnes	102	80	69	
Soil, rubble – tonnes	11,933	10,754	10,168	-13.8
Other		896	941	
Total – tonnes	316,339	303,773	296,447	-2.4
By destination (from WasteDataflow)				
Recycled or composted	98,987	102,228	121,891	19.2
Incinerated	21,090	20,444	21,423	4.8
Landfilled	196,262	181,101	153,033	-15.5
Total tonnes	316,339	303,773	296,447	-2.4
Biodegradable municipal waste landfilled	125,905	114,134	95,107	-16.7

LPSA2 Monitoring

2008/09 Out-turn for non BMW Recycling

	Tonnes	Tonnes	Tonnes	Tonnes	Tonnes
	2004/05	2005/06	2006/07	2007/08	2008/09
Glass	8,431	9,913	10,600	11,914	13,945
Fridges and WEEE	981	1,430	2,184	2,276	2,826
Oil	94	93	97	99	75
Batteries	285	306	314	222	200
Metal	5,470	5,381	5,452	4,274	3,792
50% Textiles	296	292	408	465	511
Cans	939	1,008	1,135	1,149	2,222
Non ferrous	9	20	31	38	1
Plastics	159	231	344	553	2,936
Total	16,664	18,674	20,566	20,991	26,508

Target for 2008/09 is 23,000 tonnes. The figure of 26,508 includes about 150 tonnes of non-household recycling which has to be deducted to produce the LPSA2 figure,

County wide outcome for other National indicators

NI 191 – Residual household waste per household

Household waste not sent for recycling, reuse or composting = 156,317.90 tonnes

Households = 235,961

NI191 = 662.47 kg per household

NI 193 Percentage of municipal waste sent to landfill

Municipal waste = 296,446.96 tonnes

Sent to landfill = 153,032.60 tonnes

NI 193 = 51.6%

AGENDA MANAGEMENT SHEET

Name of Committee Environment and Economy Overview and Scrutiny Committee

Date of Committee 24 September 2009

Report Title Economic Briefing Notes

Summary Regular Economic Briefing Notes (currently monthly but moving to quarterly) are currently produced by officers in Environment and Economy Directorate (EED) and circulated to all Members of the Environment and Economy Overview and Scrutiny Committee. A copy of the latest briefing is attached in **Appendix A.**

For further information please contact David Hill
Economic Strategy Advisor
Regeneration, Strategy and Europe
Tel. 01926 48603
davidhill@warwickshire.gov.uk

Would the recommended decision be contrary to the Budget and Policy Framework? Yes/No

Background Papers None

CONSULTATION ALREADY UNDERTAKEN:- *Details to be specified*

Other Committees

Local Member(s)
(With brief comments, if appropriate)

Other Elected Members Councillor D Bryden
Councillor M Doody
Councillor R Sweet
Councillor J Whitehouse

Cabinet Member Councillor P Fowler – for information
(Reports to The Cabinet, to be cleared with appropriate Cabinet Member)

Chief Executive

- Legal I Marriott - noted.
- Finance
- Other Chief Officers
- District Councils
- Health Authority
- Police
- Other Bodies/Individuals

FINAL DECISION **YES** *(If 'No' complete Suggested Next Steps)*

SUGGESTED NEXT STEPS :

Details to be specified

- Further consideration by this Committee
- To Council
- To Cabinet
- To an O & S Committee
- To an Area Committee
- Further Consultation

Environment and Economy Overview and Scrutiny Committee - 24 September 2009

Economic Briefing Notes

Report of the Strategic Director for Environment and Economy

Recommendation

Committee Members are asked to consider the attached Briefing and identify any potential issues for further scrutiny.

1. Background

- 1.1 In light of the economic downturn, officers within Environment and Economy Directorate (with input from Warwickshire Observatory) have been producing short monthly economic briefing notes since January 2009. As the economic situation is starting to ease, and following agreement with Councillor Fowler, it has been decided to move to quarterly briefings, supplemented with monthly “newsflash-style” e-mails.
- 1.2 The circulation of these briefings and (in future) monthly newsflashes is fairly broad and increasing, and Members of the Environment and Economy Overview and Scrutiny Committee are included in the distribution list automatically.
- 1.3 The timings of the publication of the quarterly economic briefings are dictated to a large extent by the release dates of key economic statistical data. After reviewing these release dates, it is proposed that the final monthly briefing will be published in mid-September, and then quarterly briefings will be released in the middle of the following months-
 - (i) December
 - (ii) March
 - (iii) June
 - (iv) September
- 1.4 If Members would like additional information on any matters in the Briefings, this can be provided on request.

2. Recommendation

- 2.1 Committee Members are asked to consider the attached Briefing and identify any potential issues for further scrutiny.

PAUL GALLAND
Strategic Director for Environment and Economy
Shire Hall
Warwick

11 September 2009

Economy & Development Service & Warwickshire Observatory

Economic Briefing

National Overview

The Office for National Statistics have revised their figures for the UK's Gross Domestic Product (total output of the economy) for the first quarter of this year, and posted preliminary figures for the second quarter. Both make fairly grim reading, with contraction of the economy much greater than first thought (-2.4% compared to the initial forecast of -1.9%); and the second quarter showing a larger fall (-0.8%) than many forecasters were expecting. National economic output has now fallen by just under 6% from its highest point (recorded in the first quarter of 2008), making this recession deeper and sharper than the previous two (see Figure 1).

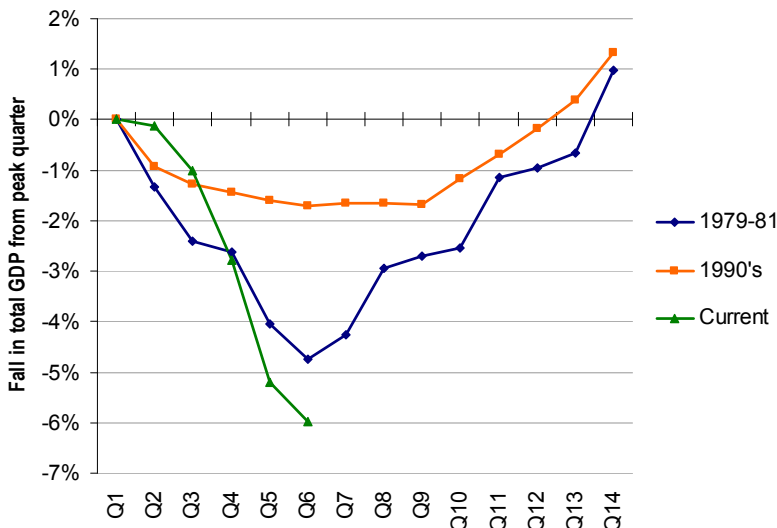


Figure 1: Comparison of total contraction of economic output from peak

There has been some positive news in recent weeks, with Manufacturing and Production Output increasing between May and June (albeit cancelling out the decline seen between April and May), output from the service sector seeing some relative improvement over the last quarter, and retail sales increasing in June (up 0.7% from May and up 2.9% higher than the same time last year). This information has also been strengthened by data from the Chartered Institute of Purchasing & Supply through their Purchasing Manager's Index (PMI) which suggests that both the Service and Manufacturing Sectors are reporting a growth in activity. The PMI for the service sector saw a 17-month high of 53.2 in July, up

from 51.6 in June (anything above 50 means an expansion of activity, below 50 a contraction); while the manufacturing PMI was 50.8 in July, up from 47.4 in June. The construction sector PMI also saw an improvement, although it is still experiencing an overall contraction in activity (47 in July compared to 44.1 in June).

However, the banking system remains fragile and money supply limited. Banks remain concerned over their balance sheets and lack of capital, with growing fears that defaulted loans and unpaid mortgages as a result of the recession could further weaken their position. Bank lending to business fell by £14.7bn in the second quarter of this year, the biggest fall since these records began in 1999. Furthermore, the broader measure of money supply used by the Bank of England ("M4") grew at its lowest annual rate since 1999 in the second quarter, and lower than the rate seen in the first quarter. These figures were key in the Monetary Policy Committee's decision to increase the programme of quantitative easing by £50bn to £175bn.

The UK economy therefore seems to be experiencing two competing forces at the moment. On the one hand, the economy is being boosted by various stimuli (tax cuts, low interest rates, quantitative easing, increased government spending); while on the other it is being constrained by the lack of money in the financial system and consumer, business and national levels of indebtedness. Which force dominates over the coming months will dictate how long the recession will last and the speed to which recovery can occur. The general consensus, as stated by Mervyn King following the publication of the latest Quarterly Inflation Report, is that recovery will happen sooner rather than later, but will be slow and protracted.



"The sustainability and strength of any recovery will be affected by necessary balance sheet adjustments of the banking, household and public sectors. Recovery could be slow and protracted."

Mervyn King, Governor of the Bank of England (Aug 09)

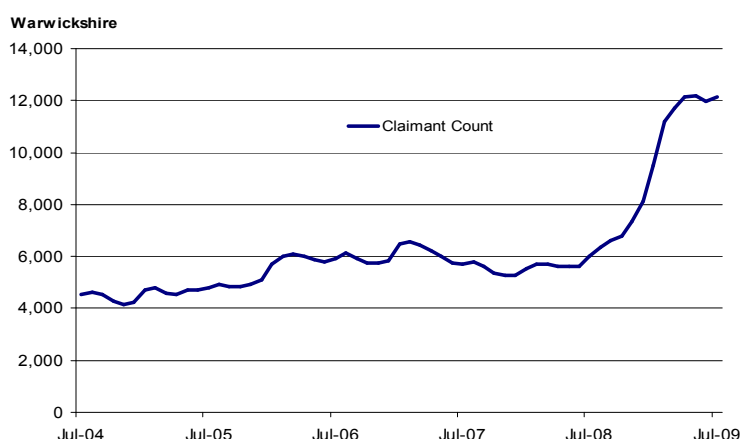
Claimant unemployment– July 2009

Warwickshire—Key Points

The Job Seekers' Allowance (JSA) claimant count level in July 2009 was 12,135, rising by 187 claimants from the previous month. This equates to a rise of 1.6% since June 2009 which is relatively small compared to the large increases experienced in recent months and the figures have now 'plateaued' around the 12,000 mark. However, even though there has only been a small increase in the figures over the last month, the year-on-year (July 2008-July 2009) percentage increase change was 102.3%.

The claimant count rate in July was 3.8%, rising by 0.1% from the previous month. The total claimant count had previously risen for eleven consecutive months since July 2008, and the year-on-year percentage increase for the County remain greater than the equivalent Regional and National figures.

Recent national media coverage has focused on a significant increase in the number of young people claiming JSA. The claimant count for those aged 18-24 in Warwickshire in July 2009 was 3,185, which represented 26.2% of the total JSA claimants. There was an increase of 125 claimants aged 18-24 from the previous month, highlighting that claimants within this age group accounted for the majority (68.8%) of the total increase in JSA claimants since June 2009.



Districts – Key Points

The year-on-year percentage increase in North Warwickshire (+143.7%) was the second highest of all Local Authorities across the West Midlands Region. The monthly increase in JSA claimants in Nuneaton and Bedworth Borough was the third highest in the Region.

The claimant count in July for all of the Districts and Boroughs in Warwickshire increased from the previous month, following an overall County, Regional and National trend. This was particularly true in Nuneaton and Bedworth, which increased by 2.0% from June 2009 and similarly, within the wider Sub-Region, Solihull, which increased by 2.7%. The year-on-year percentage increase in North Warwickshire (+143.7%) was the second highest of all Local Authorities across the West Midlands Region. The monthly increase in JSA claimants in Nuneaton and Bedworth Borough was the third highest in the Region.

National Picture

The UK claimant count level in July 2009 was 1,573,139, a rise of 19,883 on the previous month. This again represents the rise in claimant count levels over the past month which has been seen across the County and the Region. As suggested in the previous month's analysis, the fall seen in June 2009 could have been due to seasonal variations in those people claiming JSA.

	July-09		Monthly Change June 2009 – July 2009*		Year-on-Year Change July 2008 – July 2009	
	Count	Rate	Count	% Change	Count	% Change
UK	1,573,139	4.2%	19,883	1.3%	701,851	80.6%
West Midlands	177,764	5.4%	1,139	0.6%	75,403	73.7%
Coventry	11,176	5.7%	24	0.2%	4,378	64.4%
Solihull	5,429	4.5%	144	2.7%	2,706	99.4%
Warwickshire	12,135	3.8%	187	1.6%	6,137	102.3%
North Warwickshire	1,535	4.0%	26	1.7%	905	143.7%
Nuneaton & Bedworth	3,968	5.3%	79	2.0%	1,950	96.6%
Rugby	2,277	4.2%	39	1.7%	1,143	100.8%
Stratford-on-Avon	1,693	2.5%	5	0.3%	945	126.3%
Warwick	2,662	3.1%	38	1.4%	1,194	81.3%

Notes: *Claimant count figures are not seasonally adjusted. Care is needed in interpreting monthly changes in the District counts, which will be affected by seasonal fluctuations. Source: JSA Claimant count (www.nomisweb.co.uk) © Crown Copyright 2009

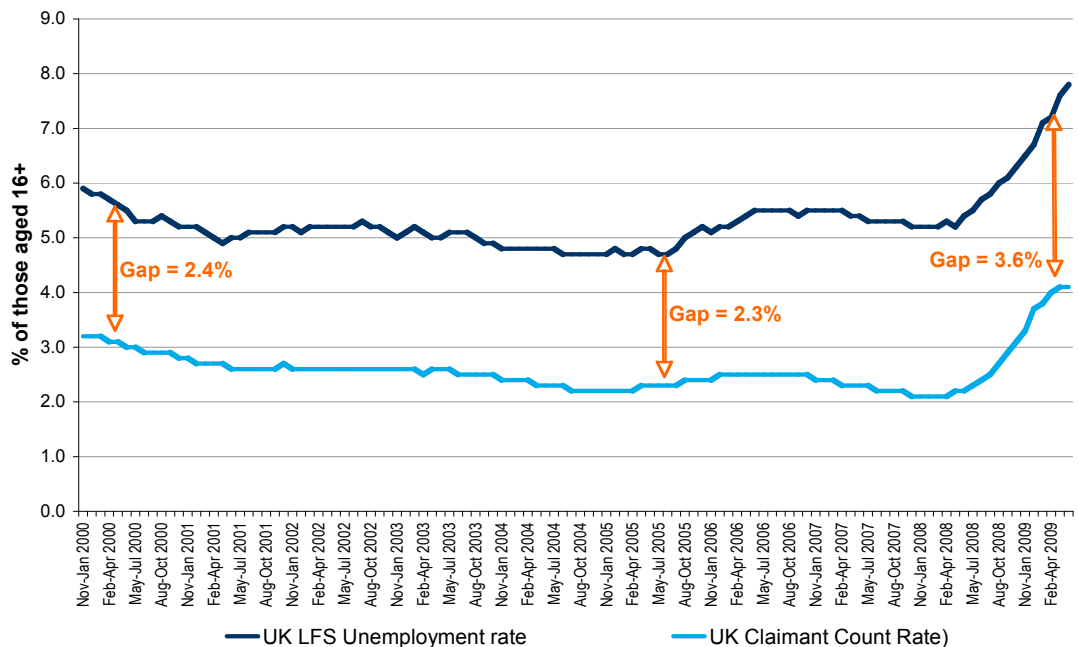
Differences between measures of unemployment

There are two main measures of unemployment within the UK. The first is the narrow measure of the number of people claiming Jobseekers Allowance (claimant count unemployment). This data is available at the local level, and is fairly up to date (statistics are produced one month in arrears). As such, this is the data that we use within this Bulletin to report levels of unemployment (page 2).

The second measure of unemployment is only available at the regional and national level, and takes a wider approach by including all those who are out of work but actively seeking employment. This therefore includes a number of people (i.e. people whose partner is working; young people under the age of 18 who are not in education or training; students looking for part-time or temporary work; and people who have left their job voluntarily) who are looking for work but are not claiming Jobseekers Allowance. This measure is known as the Labour Force Survey (LFS) unemployment (also known as the International Labour Organisation (ILO) measure, as it uses an internationally agreed definition). As the name implies, the LFS measure is based on a survey of people living in the UK, asking respondent's about their personal circumstances and activity in the labour market, and is based on a rolling three month average (2 months in arrears).

The LFS measure of unemployment is therefore always going to be at least the same, but generally higher, than the claimant count as it uses a broader definition. However, in recent months there has been an increasing divergence between the two measures, leading to a confusing picture. As such, while our article on page 2 paints a picture of very modest growth in unemployment and signs of levelling off, the LFS measure at the national level continues to show a rapid increase in the number of unemployed. Indeed, the LFS measure suggests that unemployment increased by 220,000 in the UK in the three months to June (as opposed to just 82,000 in the claimant count measure), with 7.8% of the working age population now unemployed (compared to 4.2%). The change in the difference between the two

measures is shown in the graph below.



Difference between LFS and Claimant Count unemployment rates in the UK
Source ONS

The increasing discrepancy between the two measures is puzzling and cannot be easily explained. It may be that the increasing amounts of unemployed young people are either too young or living at home and not claiming benefits, people are using their redundancy money rather than signing on, people are living off their partners incomes for the time being, or a number of other reasons. DWP have announced an inquiry into the causes behind this divergence, but the consensus amongst most commentators is that the LFS measure is probably the more accurate of the two, better reflecting the state of the labour market. It is expected that the claimant count measure will probably play catch-up in the Autumn to bring the divergence back to more "normal" levels.

It should also be noted that the LFS measure of unemployment also shows higher levels of youth unemployment, as it includes those aged 16-18 and students looking for part-time or temporary work. Nearly 40% of all unemployed (LFS measure) are aged 16-24, and the unemployment rate for young people (i.e. of the proportion of all people in that cohort) is particularly high (17.2% of all 18-24 year olds; and a massive 31.7% of those aged 16 & 17). It is these LFS statistics, more than the claimant count data; which is prompting such concern about youth unemployment and the longer-term impact that this may have.

Local News Roundup

Health food giant **Holland & Barratt** has announced major plans to relocate to a new £7.5 million headquarters in the Midlands. The retailer plans to relocate to a 35,000 sq ft, three level office at Eliot Business Park in Nuneaton, a move that could double the number of people it employs in the town to 250.



Artist Impression of the proposed **Holland & Barrett** Headquarters
Source Deeley Group

This week there was good news that Tata has secured private sector funding for **Jaguar Land Rover's** (JLR's) short term financial needs and that the UK Government support for the car manufacturer is not now needed. Business Secretary Peter Mandelson said:

"The fact that the banks and commercial capital markets are meeting JLR's funding is a clear sign of confidence in the company, its products and the automotive sector.

Sackville Properties, which developed and owns the Tournament Fields Business Park, just off the Jnc 15 of the M40, has applied for planning permission to build 2 state of the art office buildings. It is thought the buildings would cover more than 26,000 sq ft and attract more than 260 workers.

An independent corporate caterer, **Restaurants At Work** has opened a base in Leamington Spa. Director Wyn Roberts reported they have a number of new clients in the region and that their market research has shown that there are a wealth of companies in the region which are national headquarters or UK arms of international companies which offer the company considerable potential.

The University of Warwick Science Park is creating 11 micro offices at its innovation centres in Warwick & Binley through Ignite. Ignite is aimed at giving start up firms many of which are knowledge-based or innovation led the best chance for a positive start. Businesses that take up the offices will also be to tap into a range of support services through experts at the Science Park-long term funding from Advantage West Midlands and the Science Park means that much of the programme is free. Five of the 11 units have already been taken up.



Warwick Innovation Centre-
Source University of Warwick Science Park

Disclaimer

This report has been prepared jointly by Warwickshire County Council Economy & Development Service, Warwickshire Observatory and Communication and Information Group, with all reasonable skill, care, and diligence. We accept no responsibility of any nature to any third parties to whom this profile, or any part thereof, is made known. Any such party relies on the report at their own risk.

Publication date: August 2009
Directorate: EED
Contact: David Hill
Telephone: 01926 418603

AGENDA MANAGEMENT SHEET

Name of Committee Environment and Economy Overview & Scrutiny Committee

Date of Committee 24 September 2009

Report Title Provisional Items for Future Meetings

Summary A table setting out provisional items for future meetings is attached.

For further information please contact: Ann Mawdsley
Principal Committee Administrator
Tel: 01926 418079
annmawdsley@warwickshire.gov.uk

Would the recommended decision be contrary to the Budget and Policy Framework? No.

Background papers None

CONSULTATION ALREADY UNDERTAKEN:- Details to be specified

- Other Committees
- Local Member(s)
- Other Elected Members
- Cabinet Member
- Chief Executive
- Legal
- Finance
- Other Chief Officers
- District Councils
- Health Authority

Police

Other Bodies/Individuals

FINAL DECISION YES

SUGGESTED NEXT STEPS:

Details to be specified

Further consideration by this Committee

To Council

To Cabinet

To an O & S Committee

To an Area Committee

Further Consultation